

South Diamond Lake Road

- Heavy gravel and sand deposits
- Salt damaged vegetation

Basin Bottom

- Vegetation relatively sparse and dry
- Evidence of high seasonal fluctuations
- Niches beginning to fill through ecologic processes

Upper Terrace West (basin to treeline)

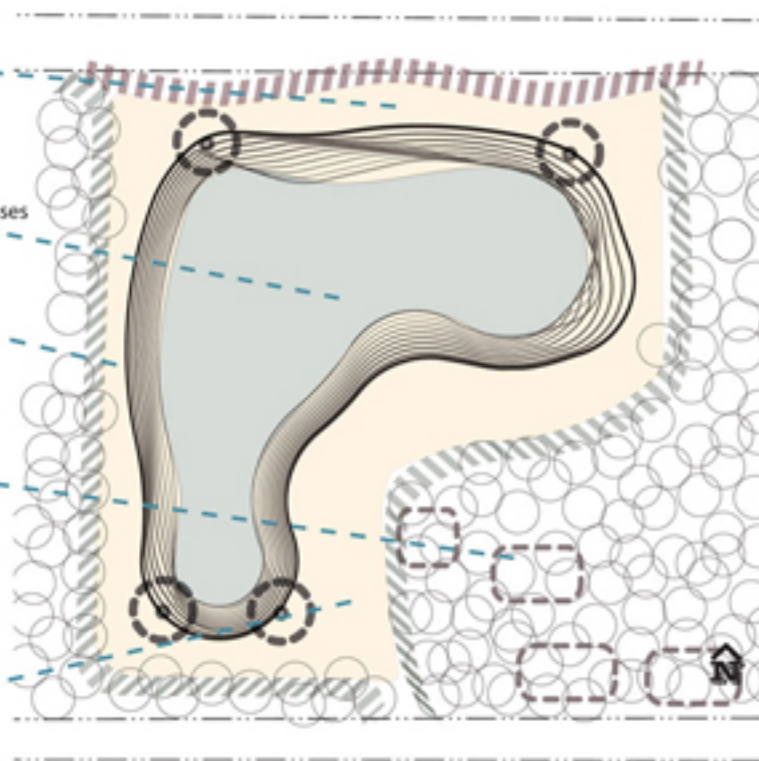
- Slopes too steep
- Weak 'wall' edge
- No visible woodland-wetland transition

Wooded area

- Minimally maintained
- Dumping (sites are circled)
- Vegetative quality of woodland is poor
 - Buckthorn
 - Tartarian honeysuckle
 - Siberian elm
 - Box elder

Upper Terrace East (basin-to woods)

- Contains 75% undesirable species
- Mostly shallow slopes except at basin edge
- Ample room for circulation
- Lacks woodland-open space transition



Basin during spring dry spell



Basin during mid-summer wet spell

Goals for Enhancing the Basin

- Use species in the basin to handle variable bounce and an influx of pollutants
- Have a large, wet-meadow transitional zone from slope of basin to upper prairie with a species mix that can handle the full range of inundation condition
- Upland will be prairie species that can outcompete weeds and handle drought
- Create visual buffers along the road and near the viewing area
- Road buffer does double duty as a salt buffer to the basin
- Reinforce treeline to create a more defined space

Vegetation Analysis

Grasses								Wildflowers			
	Big bluestem <i>Andropogon gerardii</i>	Little bluestem <i>Schyzachnium scoparium</i>	Indiangrass <i>Sorghastrum nutans</i>	Prairie cordgrass <i>Spartina pectinata</i>	Prairie dropseed <i>Sporobolus heterolepis</i>	Woolgrass <i>Scirpus cyperinus</i>	Blunt spikerush <i>Eleocharis obtusa</i>		Golden alexanders <i>Zizia aurea</i>	New England Aster <i>Aster novae-angliae</i>	Butterfly milkweed <i>Asclepias tuberosa</i>
Shrubs/Trees											
	Purple prairie clover <i>Dalea purpurea</i>	Prairie smoke <i>Geum triflorum</i>	Stiff goldenrod <i>Solidago rigida</i>	Wild bergamot <i>Monarda fistulosa</i>	Common oxeye <i>Heliopsis helianthoides</i>	Witch hazel <i>Hamamelis virginiana</i>	Downy arrowwood <i>Viburnum rafinesquianum</i>	Downy serviceberry <i>Amalanchier arborea</i>	Cockspur hawthorn <i>Craetagus crus-galli</i>	Red-osier dogwood <i>Cornus sericea</i>	

Most Common Species Chosen for Basin Restoration